












Worklist: 893

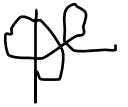
reviewed by BAW 11-4-15

Boyle

11/4/2015



<u>LAB_CASE</u>	<u>ITEM</u>	<u>TASK_ID</u>	<u>DESCRIPTION</u>	
M2015-3147	1	42950	6.1.2 Blood Cannabinoids by LC	
M2015-3227	1	42951	6.1.2 Blood Cannabinoids by LC	
M2015-3237	2	42952	6.1.2 Blood Cannabinoids by LC	
M2015-3289	1	42953	6.1.2 Blood Cannabinoids by LC	
M2015-3360	1	42954	6.1.2 Blood Cannabinoids by LC	
P2015-2017	1	42955	6.1.2 Blood Cannabinoids by LC	
P2015-2018	1	42957	6.1.2 Blood Cannabinoids by LC	
P2015-2068	1	42958	6.1.2 Blood Cannabinoids by LC	
P2015-2083	1	42960	6.1.2 Blood Cannabinoids by LC	
P2015-2092	1	42962	6.1.2 Blood Cannabinoids by LC	
P2015-2097	1	42963	6.1.2 Blood Cannabinoids by LC	
P2015-2184	1	42968	6.1.2 Blood Cannabinoids by LC	



Worklist Report

Worklist Path:	I:\CDA\CANN_BZ_Blood_DD_CS_10302015cda.wkl
Date Modified:	11/03/2015 09:43:57 AM
Date Printed:	11/03/2015 12:00:50 PM

Worklist Run Parameters

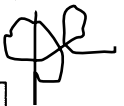
Operator Name:	62340
Run Type:	Standard Start
Part of Method to Run:	Acquisition Only
Execution for Acquisition-DA:	Synchronous
Acquisition Method Path:	D:\MassHunter\Methods
DA Method Path:	D:\MassHunter\methods
Data File Path:	D:\2015 data\Pocatello run 10-30-2015
Pre-Worklist Script:	---
Post-Worklist Script:	SCP_InstrumentStandby(){MH_Acq_Scripts.exe}
Acquisition Clean Up Script:	SCP_InstrumentStandby(){MH_Acq_Scripts.exe}
Overlapped Injection:	No
Clear sample selection after run:	Yes
Wait Time for Ready(Min):	10
Threshold Disk Value(GB):	10
Comment:	---

Plate Barcode Information

Plate	Barcode
P1	Verified that all dd ALS vials were in the correct rack positions.
P2	

Worklist Table

Sample Position	Sample Name	Method	Data File	Sample Type	Level Name	Comment	Info.
P1-A1	Blank	isp cannabinoids 103015.m	dd-Cann-Blank1-r001.d	Blank		AM 6.1.2 Cannabinoids by LCQQQ	
P1-A1	Blank	isp cannabinoids 103015.m	dd-Cann-Blank2-r001.d	Blank		AM 6.1.2 Cannabinoids by LCQQQ	
P1-A2	Blood: 1_5 ng/mL	isp cannabinoids 103015.m	dd-Cann-B_CAL1-r001.d	Calibration	1	AM 6.1.2 Cannabinoids by LCQQQ	c-THC @5ng/mL, all others @1 ng/mL
P1-A3	Blood: 2_10 ng/mL	isp cannabinoids 103015.m	dd-Cann-B_CAL2_r001.d	Calibration	2	AM 6.1.2 Cannabinoids by LCQQQ	c-THC @10ng/mL, all others @2 ng/mL
P1-A4	Blood: 5_25 ng/mL	isp cannabinoids 103015.m	dd-Cann-B_CAL3_r001.d	Calibration	3	AM 6.1.2 Cannabinoids by LCQQQ	c-THC @25ng/mL, all others @5 ng/mL
P1-A5	Blood: 10_50 ng/mL	isp cannabinoids 103015.m	dd-Cann-B_CAL4_r001.d	Calibration	4	AM 6.1.2 Cannabinoids by LCQQQ	c-THC @50ng/mL, all others @10 ng/mL
P1-A6	Blood: 25_125 ng/mL	isp cannabinoids 103015.m	dd-Cann-B_CAL5_r001.d	Calibration	5	AM 6.1.2 Cannabinoids by LCQQQ	c-THC @125ng/mL, all others @25 ng/mL
P1-A7	Blood: 50_250 ng/mL	isp cannabinoids 103015.m	dd-Cann-B_CAL6_r001.d	Calibration	6	AM 6.1.2 Cannabinoids by LCQQQ	c-THC @250ng/mL, all others @50 ng/mL
P1-A8	Blood: 100_500 ng/mL	isp cannabinoids 103015.m	dd-Cann-B_CAL7_r001.d	Calibration	7	AM 6.1.2 Cannabinoids by LCQQQ	c-THC @500ng/mL, all others @100 ng/mL
P1-A1	Blank	isp cannabinoids 103015.m	dd-Cann-Carryover blank1_r001.d	Blank		AM 6.1.2 Cannabinoids by LCQQQ	
P1-A9		isp cannabinoids 103015.m	dd-Cann-B-NC-r001.d	Sample			



Sample Position	Sample Name	Method	Data File	Sample Type	Level Name	Comment	Info.
	Blood Negative Control					AM 6.1.2 Cannabinoids by LCQQQ	Negative Blood UTAK Lot B0689
P1-B1	Blood 3_15ngmL	isp cannabinoids 103015.m	dd-Cann-B-3_15-r001.d	Sample		AM 6.1.2 Cannabinoids by LCQQQ	c-THC @15ng/mL, all others @3 ng/mL
P1-A9	Blank M2015-3147-1	isp cannabinoids 103015.m	dd-Cann-M2015-3147-1_BLK_r001.d	Blank		AM 6.1.2 Cannabinoids by LCQQQ	
P1-B2	M2015-3147-1	isp cannabinoids 103015.m	dd-Cann-M2015-3147-1-r001.d	Sample		AM 6.1.2 Cannabinoids by LCQQQ	Blood
P1-A9	Blank M2015-3227-1	isp cannabinoids 103015.m	dd-Cann-M2015-3227-1_BLK_r001.d	Blank		AM 6.1.2 Cannabinoids by LCQQQ	
P1-B3	M2015-3227-1	isp cannabinoids 103015.m	dd-Cann-M2015-3227-1-r001.d	Sample		AM 6.1.2 Cannabinoids by LCQQQ	Blood
P1-A9	Blank M2015-3237-2	isp cannabinoids 103015.m	dd-Cann-M2015-3237-2_BLK_r001.d	Blank		AM 6.1.2 Cannabinoids by LCQQQ	
P1-B4	M2015-3237-2	isp cannabinoids 103015.m	dd-Cann-M2015-3237-2-r001.d	Sample		AM 6.1.2 Cannabinoids by LCQQQ	Blood
P1-A9	Blank M2015-3289-1	isp cannabinoids 103015.m	dd-Cann-M2015-3289-1_BLK_r001.d	Blank		AM 6.1.2 Cannabinoids by LCQQQ	
P1-B5	M2015-3289-1	isp cannabinoids 103015.m	dd-Cann-M2015-3289-1-r001.d	Sample		AM 6.1.2 Cannabinoids by LCQQQ	Blood
P1-A9	Blank M2015-3360-1	isp cannabinoids 103015.m	dd-Cann-M2015-3360-1_BLK_r001.d	Blank		AM 6.1.2 Cannabinoids by LCQQQ	
P1-B6	M2015-3360-1	isp cannabinoids 103015.m	dd-Cann-M2015-3360-1-r001.d	Sample		AM 6.1.2 Cannabinoids by LCQQQ	Blood
P1-A9	Blank P2015-2017-1	isp cannabinoids 103015.m	dd-Cann-P2015-2017-1_BLK_r001.d	Blank		AM 6.1.2 Cannabinoids by LCQQQ	
P1-B7	P2015-2017-1	isp cannabinoids 103015.m	dd-Cann-P2015-2017-1-r001.d	Sample		AM 6.1.2 Cannabinoids by LCQQQ	Blood
P1-A9	Blank P2015-2018-1	isp cannabinoids 103015.m	dd-Cann-P2015-2018-1_BLK_r001.d	Blank		AM 6.1.2 Cannabinoids by LCQQQ	
P1-B8	P2015-2018-1	isp cannabinoids 103015.m	dd-Cann-P2015-2018-1-r001.d	Sample		AM 6.1.2 Cannabinoids by LCQQQ	Blood
P1-A9	Blank P2015-2068-1	isp cannabinoids 103015.m	dd-Cann-P2015-2068-1_BLK_r001.d	Blank		AM 6.1.2 Cannabinoids by LCQQQ	
P1-B9	P2015-2068-1	isp cannabinoids 103015.m	dd-Cann-P2015-2068-1-r001.d	Sample		AM 6.1.2 Cannabinoids by LCQQQ	Blood
P1-A9	Blank P2015-2083-1	isp cannabinoids 103015.m	dd-Cann-P2015-2083-1_BLK_r001.d	Blank		AM 6.1.2 Cannabinoids by LCQQQ	
P1-C1	P2015-2083-1	isp cannabinoids 103015.m	dd-Cann-P2015-2083-1-r001.d	Sample		AM 6.1.2 Cannabinoids by LCQQQ	Blood
P1-A9	Blank P2015-2092-1	isp cannabinoids 103015.m	dd-Cann-P2015-2092-1_BLK_r001.d	Blank		AM 6.1.2 Cannabinoids by LCQQQ	
P1-C2	P2015-2092-1	isp cannabinoids 103015.m	dd-Cann-P2015-2092-1-r001.d	Sample		AM 6.1.2 Cannabinoids by LCQQQ	Blood
P1-A9	Blank	isp cannabinoids 103015.m	dd-Cann-Carryover blank2_r001.d	Blank		AM 6.1.2 Cannabinoids by LCQQQ	
P1-C3	Blood 25_125ngmL	isp cannabinoids 103015.m	dd-Cann-B-25_125-r001.d	Sample		AM 6.1.2 Cannabinoids by LCQQQ	c-THC @125ng/mL, all others @25 ng/mL
P1-A9		isp cannabinoids 103015.m		Blank			



Sample Position	Sample Name	Method	Data File	Sample Type	Level Name	Comment	Info.
	Blank P2015-2097-1		dd-Cann-P2015-2097-1_BLK_r001.d			AM 6.1.2 Cannabinoids by LCQQQ	
P1-C4	P2015-2097-1	isp cannabinoids 103015.m	dd-Cann-P2015-2097-1-r001.d	Sample		AM 6.1.2 Cannabinoids by LCQQQ	Blood
P1-A9	Blank P2015-2184-1	isp cannabinoids 103015.m	dd-Cann-P2015-2184-1_BLK_r001.d	Blank		AM 6.1.2 Cannabinoids by LCQQQ	
P1-C5	P2015-2184-1	isp cannabinoids 103015.m	dd-Cann-P2015-2184-1-r001.d	Sample		AM 6.1.2 Cannabinoids by LCQQQ	Blood
P1-A9	Blank	isp cannabinoids 103015.m	dd-Cann-Blank3-r001.d	Blank		AM 6.1.2 Cannabinoids by LCQQQ	
P2-A9	Blank	isp cannabinoids 103015.m	cs-Cann-Blank2-r001.d	Blank		AM 6.1.2 Cannabinoids by LCQQQ	
P2-A2	Blood: 1_5 ngmL	isp cannabinoids 103015.m	cs-Cann-B_CAL1-r001.d	Calibration	1	AM 6.1.2 Cannabinoids by LCQQQ	c-THC @5ng/mL, all others @1 ng/mL
P2-A3	Blood: 2_10 ngmL	isp cannabinoids 103015.m	cs-Cann-B_CAL2_r001.d	Calibration	2	AM 6.1.2 Cannabinoids by LCQQQ	c-THC @10ng/mL, all others @2 ng/mL
P2-A4	Blood: 5_25 ngmL	isp cannabinoids 103015.m	cs-Cann-B_CAL3_r001.d	Calibration	3	AM 6.1.2 Cannabinoids by LCQQQ	c-THC @25ng/mL, all others @5 ng/mL
P2-A5	Blood: 10_50 ngmL	isp cannabinoids 103015.m	cs-Cann-B_CAL4_r001.d	Calibration	4	AM 6.1.2 Cannabinoids by LCQQQ	c-THC @50ng/mL, all others @10 ng/mL
P2-A6	Blood: 25_125 ngmL	isp cannabinoids 103015.m	cs-Cann-B_CAL5_r001.d	Calibration	5	AM 6.1.2 Cannabinoids by LCQQQ	c-THC @125ng/mL, all others @25 ng/mL
P2-A7	Blood: 50_250 ngmL	isp cannabinoids 103015.m	cs-Cann-B_CAL6_r001.d	Calibration	6	AM 6.1.2 Cannabinoids by LCQQQ	c-THC @250ng/mL, all others @50 ng/mL
P2-A8	Blood: 100_500 ngmL	isp cannabinoids 103015.m	cs-Cann-B_CAL7_r001.d	Calibration	7	AM 6.1.2 Cannabinoids by LCQQQ	c-THC @500ng/mL, all others @100 ng/mL
P2-A1	Blank	isp cannabinoids 103015.m	cs-Cann-Carryover blank1_r001.d	Blank		AM 6.1.2 Cannabinoids by LCQQQ	
P2-A9	Blood Negative Control	isp cannabinoids 103015.m	cs-Cann-B-NC-r001.d	Sample		AM 6.1.2 Cannabinoids by LCQQQ	Negative Blood UTAK Lot B0689
P2-B1	Blood 3_15ngmL	isp cannabinoids 103015.m	cs-Cann-B-3_15-r001.d	Sample		AM 6.1.2 Cannabinoids by LCQQQ	c-THC @15ng/mL, all others @3 ng/mL
P2-A9	Blank M2015-2859-1	isp cannabinoids 103015.m	cs-Cann-M2015-2859-1_BLK_r001.d	Blank		AM 6.1.2 Cannabinoids by LCQQQ	
P2-B2	M2015-2859-1	isp cannabinoids 103015.m	cs-Cann-M2015-2859-r001.d	Sample		AM 6.1.2 Cannabinoids by LCQQQ	Blood
P2-A9	Blank M2015-3180-1	isp cannabinoids 103015.m	cs-Cann-M2015-3180-1_BLK_r001.d	Blank		AM 6.1.2 Cannabinoids by LCQQQ	
P2-B3	M2015-3180-1	isp cannabinoids 103015.m	cs-Cann-M2015-3180-1-r001.d	Sample		AM 6.1.2 Cannabinoids by LCQQQ	Blood
P2-A9	Blank M2015-3430-1	isp cannabinoids 103015.m	cs-Cann-M2015-3430-1_BLK_r001.d	Blank		AM 6.1.2 Cannabinoids by LCQQQ	
P2-B4	M2015-3430-1	isp cannabinoids 103015.m	cs-Cann-M2015-3430-1-r001.d	Sample		AM 6.1.2 Cannabinoids by LCQQQ	Blood
P2-A9		isp cannabinoids 103015.m	cs-Cann-P2015-2006-1_BLK_r001.d	Blank			



Sample Position	Sample Name	Method	Data File	Sample Type	Level Name	Comment	Info.
	Blank P2015-2006-1					AM 6.1.2 Cannabinoids by LCQQQ	
P2-B5	P2015-2006-1	isp cannabinoids 103015.m	cs-Cann-P2015-2006-1-r001.d	Sample		AM 6.1.2 Cannabinoids by LCQQQ	Blood
P2-A9	Blank P2015-2088-2	isp cannabinoids 103015.m	cs-Cann-P2015-2088-2_BLK_r001.d	Blank		AM 6.1.2 Cannabinoids by LCQQQ	
P2-B6	P2015-2088-2	isp cannabinoids 103015.m	cs-Cann-P2015-2088-2-r001.d	Sample		AM 6.1.2 Cannabinoids by LCQQQ	Blood
P2-A9	Blank P2015-2128-1	isp cannabinoids 103015.m	cs-Cann-P2015-2128-11_BLK_r001.d	Blank		AM 6.1.2 Cannabinoids by LCQQQ	
P2-B7	P2015-2128-1	isp cannabinoids 103015.m	cs-Cann-P2015-2128-1-r001.d	Sample		AM 6.1.2 Cannabinoids by LCQQQ	Blood
P2-A9	Blank P2015-2191-1	isp cannabinoids 103015.m	cs-Cann-P2015-2191-1_BLK_r001.d	Blank		AM 6.1.2 Cannabinoids by LCQQQ	
P2-B8	P2015-2191-1	isp cannabinoids 103015.m	cs-Cann-P2015-2191-1-r001.d	Sample		AM 6.1.2 Cannabinoids by LCQQQ	Blood
P2-A9	Blank P2015-2208-1	isp cannabinoids 103015.m	cs-Cann-P2015-2208-1_BLK_r001.d	Blank		AM 6.1.2 Cannabinoids by LCQQQ	
P2-B9	P2015-2208-1	isp cannabinoids 103015.m	cs-Cann-P2015-2208-1-r001.d	Sample		AM 6.1.2 Cannabinoids by LCQQQ	Blood
P2-A9	Blank P2015-2209-1	isp cannabinoids 103015.m	cs-Cann-P2015-2209-1_BLK_r001.d	Blank		AM 6.1.2 Cannabinoids by LCQQQ	
P2-C1	P2015-2209-1	isp cannabinoids 103015.m	cs-Cann-P2015-2209-1-r001.d	Sample		AM 6.1.2 Cannabinoids by LCQQQ	Blood
P2-A9	Blank P2015-2243-1	isp cannabinoids 103015.m	cs-Cann-P2015-2243-1_BLK_r001.d	Blank		AM 6.1.2 Cannabinoids by LCQQQ	
P2-C2	P2015-2243-1	isp cannabinoids 103015.m	cs-Cann-P2015-2243-1-r001.d	Sample		AM 6.1.2 Cannabinoids by LCQQQ	Blood
P2-A1	Blank	isp cannabinoids 103015.m	cs-Cann-Carryover blank2_r001.d	Blank		AM 6.1.2 Cannabinoids by LCQQQ	
P2-C3	Blood 25_125ng/mL	isp cannabinoids 103015.m	cs-Cann-B-25_125-r001.d	Sample		AM 6.1.2 Cannabinoids by LCQQQ	c-THC @125ng/mL, all others @25 ng/mL
P2-A9	Blank P2015-2248-1	isp cannabinoids 103015.m	cs-Cann-P2015-2248-1_BLK_r001.d	Blank		AM 6.1.2 Cannabinoids by LCQQQ	
P2-C4	P2015-2248-1	isp cannabinoids 103015.m	cs-Cann-P2015-2248-1-r001.d	Sample		AM 6.1.2 Cannabinoids by LCQQQ	Blood
P2-A9	Blank P2015-2267-1	isp cannabinoids 103015.m	cs-Cann-P2015-2267-1_BLK_r001.d	Blank		AM 6.1.2 Cannabinoids by LCQQQ	
P2-C5	P2015-2267-1	isp cannabinoids 103015.m	cs-Cann-P2015-2267-1-r001.d	Sample		AM 6.1.2 Cannabinoids by LCQQQ	Blood
P2-A9	Blank P2015-1673-1	isp cannabinoids 103015.m	cs-Cann-P2015-1673-1_BLK_r001.d	Blank		AM 6.1.2 Cannabinoids by LCQQQ	
P2-C6	P2015-1673-1	isp cannabinoids 103015.m	cs-Cann-P2015-1673-1-r001.d	Sample		AM 6.1.2 Cannabinoids by LCQQQ	Blood
P2-A9	Blank P2015-1677-1	isp cannabinoids 103015.m	cs-Cann-P2015-1677-1_BLK_r001.d	Blank		AM 6.1.2 Cannabinoids by LCQQQ	
P2-C7	P2015-1677-1	isp cannabinoids 103015.m	cs-Cann-P2015-1677-1-r001.d	Sample		AM 6.1.2 Cannabinoids by LCQQQ	Blood
P2-A9		isp cannabinoids 103015.m	cs-Cann-P2015-1794-1_BLK_r001.d	Blank			



Sample Position	Sample Name	Method	Data File	Sample Type	Level Name	Comment	Info.
	Blank P2015-1794-1					AM 6.1.2 Cannabinoids by LCQQQ	
P2-C8	P2015-1794-1	isp cannabinoids 103015.m	cs-Cann-P2015-1794-1-r001.d	Sample		AM 6.1.2 Cannabinoids by LCQQQ	Blood
P1-F9	Blank	D:\MassHunter\methods\Benzos_Z_Drugs_ACN_FA_ISP.m	dd-Blank1-r002.d	Blank		AM 6.1.1 Benzo and Z by LCQQQ	
P1-F9	Blank	D:\MassHunter\methods\Benzos_Z_Drugs_ACN_FA_ISP.m	dd-Blank2-r002.d	Blank		AM 6.1.1 Benzo and Z by LCQQQ	
P1-F8	5 ng/mL	D:\MassHunter\methods\Benzos_Z_Drugs_ACN_FA_ISP.m	dd-5 ng/mL-r001.d	Calibration	1	AM 6.1.1 Benzo and Z by LCQQQ	
P1-F7	10 ng/mL	D:\MassHunter\methods\Benzos_Z_Drugs_ACN_FA_ISP.m	dd-10 ng/mL-r001.d	Calibration	2	AM 6.1.1 Benzo and Z by LCQQQ	
P1-F6	25 ng/mL	D:\MassHunter\methods\Benzos_Z_Drugs_ACN_FA_ISP.m	dd-25 ng/mL_r001.d	Calibration	3	AM 6.1.1 Benzo and Z by LCQQQ	
P1-F5	50 ng/mL	D:\MassHunter\methods\Benzos_Z_Drugs_ACN_FA_ISP.m	dd-50 ng/mL_r001.d	Calibration	4	AM 6.1.1 Benzo and Z by LCQQQ	
P1-F4	100 ng/mL	D:\MassHunter\methods\Benzos_Z_Drugs_ACN_FA_ISP.m	dd-100 ng/mL_r001.d	Calibration	5	AM 6.1.1 Benzo and Z by LCQQQ	
P1-F3	500 ng/mL	D:\MassHunter\methods\Benzos_Z_Drugs_ACN_FA_ISP.m	dd-500 ng/mL_r001.d	Calibration	6	AM 6.1.1 Benzo and Z by LCQQQ	
P1-F2	1000 ng/mL	D:\MassHunter\methods\Benzos_Z_Drugs_ACN_FA_ISP.m	dd-1000 ng/mL_r001.d	Calibration	7	AM 6.1.1 Benzo and Z by LCQQQ	
P1-F1	3000 ng/mL	D:\MassHunter\methods\Benzos_Z_Drugs_ACN_FA_ISP.m	dd-3000 ng/mL_r001.d	Calibration	8	AM 6.1.1 Benzo and Z by LCQQQ	
P1-F9	Blank	D:\MassHunter\methods\Benzos_Z_Drugs_ACN_FA_ISP.m	dd-Carryover blank1_r002.d	Blank		AM 6.1.1 Benzo and Z by LCQQQ	
P1-E9	Negative Blood Control	D:\MassHunter\methods\Benzos_Z_Drugs_ACN_FA_ISP.m	dd-NC-B_r001.d	Sample		AM 6.1.1 Benzo and Z by LCQQQ	UTAK Negative Whole Blood LOT B0689
P1-E8	Positive Blood Control	D:\MassHunter\methods\Benzos_Z_Drugs_ACN_FA_ISP.m	dd-PC-B-BZ-r001.d	Sample		AM 6.1.1 Benzo and Z by LCQQQ	200 ng/mL Benzodiazepines Mix Cerilliant lot FE012413-02 in neg LOT B0130
P1-E9	Blank - M2015-3402-2	D:\MassHunter\methods\Benzos_Z_Drugs_ACN_FA_ISP.m	dd-Carryover blank-M2015-3402-2_r001.d	Blank		AM 6.1.1 Benzo and Z by LCQQQ	
P1-E7	M2015-3402-2	D:\MassHunter\methods\Benzos_Z_Drugs_ACN_FA_ISP.m	dd-M2015-3402-2-r001.d	Sample		AM 6.1.1 Benzo and Z by LCQQQ	Blood
P1-E9	Blank - P2015-2018-1	D:\MassHunter\methods\Benzos_Z_Drugs_ACN_FA_ISP.m	dd-Carryover blank-P2015-2018-1_r001.d	Blank		AM 6.1.1 Benzo and Z by LCQQQ	
P1-E6	P2015-2018-1	D:\MassHunter\methods\Benzos_Z_Drugs_ACN_FA_ISP.m	dd-P2015-2018-1-r001.d	Sample		AM 6.1.1 Benzo and Z by LCQQQ	Blood
P1-E9	Blank - P2015-2025-1	D:\MassHunter\methods\Benzos_Z_Drugs_ACN_FA_ISP.m	dd-Carryover blank-P2015-2025-1_r001.d	Blank		AM 6.1.1 Benzo and Z by LCQQQ	
P1-E5	P2015-2025-1	D:\MassHunter\methods\Benzos_Z_Drugs_ACN_FA_ISP.m	dd-P2015-2025-1-r001.d	Sample		AM 6.1.1 Benzo and Z by LCQQQ	Blood
P1-E9	Blank - P2015-2033-1	D:\MassHunter\methods\Benzos_Z_Drugs_ACN_FA_ISP.m	dd-Carryover blank-P2015-2033-1_r001.d	Blank		AM 6.1.1 Benzo and Z by LCQQQ	
P1-E4	P2015-2033-1	D:\MassHunter\methods\Benzos_Z_Drugs_ACN_FA_ISP.m	dd-P2015-2033-1-r001.d	Sample		AM 6.1.1 Benzo and Z by LCQQQ	Blood
P1-E9	Blank - P2015-2034-1	D:\MassHunter\methods\Benzos_Z_Drugs_ACN_FA_ISP.m	dd-Carryover blank-P2015-2034-1_r001.d	Blank		AM 6.1.1 Benzo and Z by LCQQQ	
P1-E3		D:\MassHunter\methods\Benzos_Z_Drugs_ACN_FA_ISP.m		Sample			Blood



Sample Position	Sample Name	Method	Data File	Sample Type	Level Name	Comment	Info.
	P2015-2034-1		dd-P2015-2034-1-r001.d			AM 6.1.1 Benzo and Z by LCQQQ	
P1-E9	Blank - P2015-2083-1	D:\MassHunter\methods\Benzos_Z_Drugs_ACN_FA_ISP.m	dd-Carryover blank-P2015-2083-1_r001.d	Blank		AM 6.1.1 Benzo and Z by LCQQQ	
P1-E2	P2015-2083-1	D:\MassHunter\methods\Benzos_Z_Drugs_ACN_FA_ISP.m	dd-P2015-2083-1-r001.d	Sample		AM 6.1.1 Benzo and Z by LCQQQ	Blood
P1-E9	Blank - P2015-2092-1	D:\MassHunter\methods\Benzos_Z_Drugs_ACN_FA_ISP.m	dd-Carryover blank-P2015-2092-1_r001.d	Blank		AM 6.1.1 Benzo and Z by LCQQQ	
P1-E1	P2015-2092-1	D:\MassHunter\methods\Benzos_Z_Drugs_ACN_FA_ISP.m	dd-P2015-2092-1-r001.d	Sample		AM 6.1.1 Benzo and Z by LCQQQ	Blood
P1-E9	Blank - P2015-2113-1	D:\MassHunter\methods\Benzos_Z_Drugs_ACN_FA_ISP.m	dd-Carryover blank-P2015-2113-1_r001.d	Blank		AM 6.1.1 Benzo and Z by LCQQQ	
P1-D9	P2015-2113-1	D:\MassHunter\methods\Benzos_Z_Drugs_ACN_FA_ISP.m	dd-P2015-2113-1-r001.d	Sample		AM 6.1.1 Benzo and Z by LCQQQ	Blood
P1-E9	Blank - P2015-2123-1	D:\MassHunter\methods\Benzos_Z_Drugs_ACN_FA_ISP.m	dd-Carryover blank-P2015-2123-1_r001.d	Blank		AM 6.1.1 Benzo and Z by LCQQQ	
P1-D8	P2015-2123-1	D:\MassHunter\methods\Benzos_Z_Drugs_ACN_FA_ISP.m	dd-P2015-2123-1-r001.d	Sample		AM 6.1.1 Benzo and Z by LCQQQ	Blood
P1-E9	Blank - P2015-2161-1	D:\MassHunter\methods\Benzos_Z_Drugs_ACN_FA_ISP.m	dd-Carryover blank-P2015-2161-1_r001.d	Blank		AM 6.1.1 Benzo and Z by LCQQQ	
P1-D7	P2015-2161-1	D:\MassHunter\methods\Benzos_Z_Drugs_ACN_FA_ISP.m	dd-P2015-2161-1-r001.d	Sample		AM 6.1.1 Benzo and Z by LCQQQ	Blood
P1-F9	Blank	D:\MassHunter\methods\Benzos_Z_Drugs_ACN_FA_ISP.m	dd-Carryover blank3_r001.d	Blank		AM 6.1.1 Benzo and Z by LCQQQ	
P2-F9	Blank	D:\MassHunter\methods\Benzos_Z_Drugs_ACN_FA_ISP.m	cs-Blank2-r002.d	Blank		AM 6.1.1 Benzo and Z by LCQQQ	
P2-F8	5 ng/mL	D:\MassHunter\methods\Benzos_Z_Drugs_ACN_FA_ISP.m	cs-5 ng/mL-r001.d	Calibration	1	AM 6.1.1 Benzo and Z by LCQQQ	
P2-F7	10 ng/mL	D:\MassHunter\methods\Benzos_Z_Drugs_ACN_FA_ISP.m	cs-10 ng/mL-r001.d	Calibration	2	AM 6.1.1 Benzo and Z by LCQQQ	
P2-F6	25 ng/mL	D:\MassHunter\methods\Benzos_Z_Drugs_ACN_FA_ISP.m	cs-25 ng/mL_r001.d	Calibration	3	AM 6.1.1 Benzo and Z by LCQQQ	
P2-F5	50 ng/mL	D:\MassHunter\methods\Benzos_Z_Drugs_ACN_FA_ISP.m	cs-50 ng/mL_r001.d	Calibration	4	AM 6.1.1 Benzo and Z by LCQQQ	
P2-F4	100 ng/mL	D:\MassHunter\methods\Benzos_Z_Drugs_ACN_FA_ISP.m	cs-100 ng/mL_r001.d	Calibration	5	AM 6.1.1 Benzo and Z by LCQQQ	
P2-F3	500 ng/mL	D:\MassHunter\methods\Benzos_Z_Drugs_ACN_FA_ISP.m	cs-500 ng/mL_r001.d	Calibration	6	AM 6.1.1 Benzo and Z by LCQQQ	
P2-F2	1000 ng/mL	D:\MassHunter\methods\Benzos_Z_Drugs_ACN_FA_ISP.m	cs-1000 ng/mL_r001.d	Calibration	7	AM 6.1.1 Benzo and Z by LCQQQ	
P2-F1	3000 ng/mL	D:\MassHunter\methods\Benzos_Z_Drugs_ACN_FA_ISP.m	cs-3000 ng/mL_r001.d	Calibration	8	AM 6.1.1 Benzo and Z by LCQQQ	
P2-F9	Blank	D:\MassHunter\methods\Benzos_Z_Drugs_ACN_FA_ISP.m	cs-Carryover blank1_r002.d	Blank		AM 6.1.1 Benzo and Z by LCQQQ	
P2-E9	Negative Blood Control	D:\MassHunter\methods\Benzos_Z_Drugs_ACN_FA_ISP.m	cs-NC-B_r001.d	Sample		AM 6.1.1 Benzo and Z by LCQQQ	UTAK Negative Whole Blood LOT B0689
P2-E8	Positive Blood Control	D:\MassHunter\methods\Benzos_Z_Drugs_ACN_FA_ISP.m	cs-PC-B-BZ-r001.d	Sample		AM 6.1.1 Benzo and Z by LCQQQ	200 ng/mL Benzodiazepines Mix Cerilliant lot FE012413-02 in neg LOT B0130
P2-E9		D:\MassHunter\methods\Benzos_Z_Drugs_ACN_FA_ISP.m		Blank			



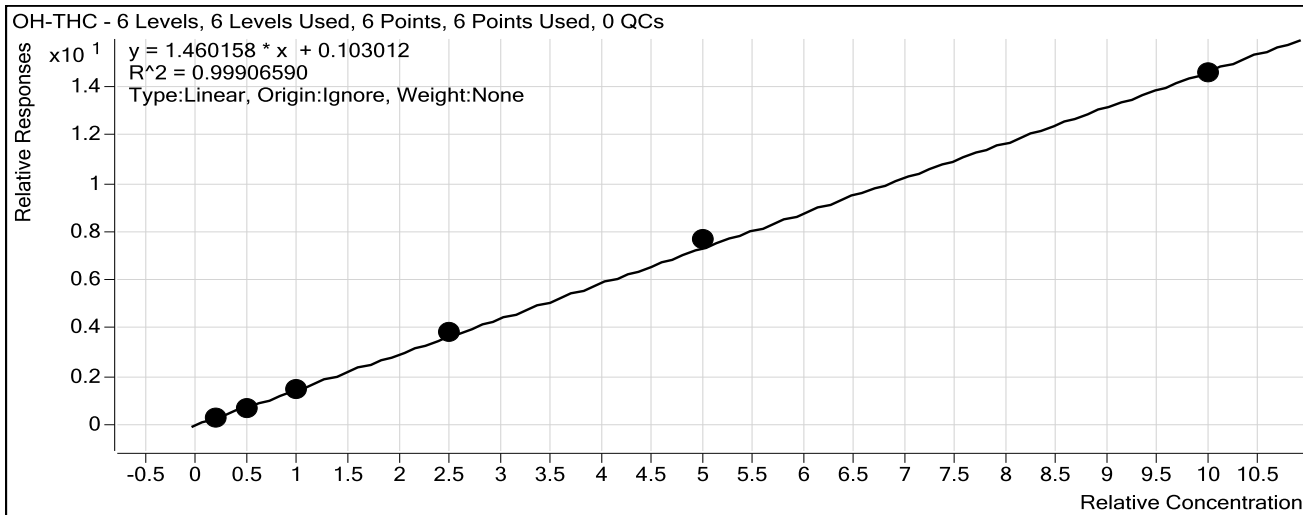
Sample Position	Sample Name	Method	Data File	Sample Type	Level Name	Comment	Info.
	Blank - M2015-3149-1		cs-Carryover blank-M2015-3149-1_r001.d			AM 6.1.1 Benzo and Z by LCQQQ	
P2-E7	M2015-3149-1	D:\MassHunter\methods\Benzos_Z_Drugs_ACN_FA_ISP.m	cs-M2015-3149-1-r001.d	Sample		AM 6.1.1 Benzo and Z by LCQQQ	Blood
P2-E9	Blank - P2015-2088-1	D:\MassHunter\methods\Benzos_Z_Drugs_ACN_FA_ISP.m	cs-Carryover blank-P2015-2088-1_r001.d	Blank		AM 6.1.1 Benzo and Z by LCQQQ	
P2-E6	P2015-2088-1	D:\MassHunter\methods\Benzos_Z_Drugs_ACN_FA_ISP.m	cs-P2015-2088-1-r001.d	Sample		AM 6.1.1 Benzo and Z by LCQQQ	Blood
P2-E9	Blank - P2015-2088-3	D:\MassHunter\methods\Benzos_Z_Drugs_ACN_FA_ISP.m	cs-Carryover blank-P2015-2088-3_r001.d	Blank		AM 6.1.1 Benzo and Z by LCQQQ	
P2-E5	P2015-2088-3	D:\MassHunter\methods\Benzos_Z_Drugs_ACN_FA_ISP.m	cs-P2015-2088-3-r001.d	Sample		AM 6.1.1 Benzo and Z by LCQQQ	Blood
P2-E9	Blank - P2015-2189-1	D:\MassHunter\methods\Benzos_Z_Drugs_ACN_FA_ISP.m	cs-Carryover blank-P2015-2189-1_r001.d	Blank		AM 6.1.1 Benzo and Z by LCQQQ	
P2-E4	P2015-2189-1	D:\MassHunter\methods\Benzos_Z_Drugs_ACN_FA_ISP.m	cs-P2015-2189-1-r001.d	Sample		AM 6.1.1 Benzo and Z by LCQQQ	Blood
P2-E9	Blank - P2015-2191-1	D:\MassHunter\methods\Benzos_Z_Drugs_ACN_FA_ISP.m	cs-Carryover blank-P2015-2191-1_r001.d	Blank		AM 6.1.1 Benzo and Z by LCQQQ	
P2-E3	P2015-2191-1	D:\MassHunter\methods\Benzos_Z_Drugs_ACN_FA_ISP.m	cs-P2015-2191-1-r001.d	Sample		AM 6.1.1 Benzo and Z by LCQQQ	Blood
P2-E9	Blank - P2015-2192-1	D:\MassHunter\methods\Benzos_Z_Drugs_ACN_FA_ISP.m	cs-Carryover blank-P2015-2192-1_r001.d	Blank		AM 6.1.1 Benzo and Z by LCQQQ	
P2-E2	P2015-2192-1	D:\MassHunter\methods\Benzos_Z_Drugs_ACN_FA_ISP.m	cs-P2015-2192-1-r001.d	Sample		AM 6.1.1 Benzo and Z by LCQQQ	Blood
P2-E9	Blank - P2015-2208-1	D:\MassHunter\methods\Benzos_Z_Drugs_ACN_FA_ISP.m	cs-Carryover blank-P2015-2208-1_r001.d	Blank		AM 6.1.1 Benzo and Z by LCQQQ	
P2-E1	P2015-2208-1	D:\MassHunter\methods\Benzos_Z_Drugs_ACN_FA_ISP.m	cs-P2015-2208-1-r001.d	Sample		AM 6.1.1 Benzo and Z by LCQQQ	Blood
P2-E9	Blank - P2015-2209-1	D:\MassHunter\methods\Benzos_Z_Drugs_ACN_FA_ISP.m	cs-Carryover blank-P2015-2209-1_r001.d	Blank		AM 6.1.1 Benzo and Z by LCQQQ	
P2-D9	P2015-2209-1	D:\MassHunter\methods\Benzos_Z_Drugs_ACN_FA_ISP.m	cs-P2015-2209-1-r001.d	Sample		AM 6.1.1 Benzo and Z by LCQQQ	Blood
P2-E9	Blank - P2015-2230-1	D:\MassHunter\methods\Benzos_Z_Drugs_ACN_FA_ISP.m	cs-Carryover blank-P2015-2230-1_r001.d	Blank		AM 6.1.1 Benzo and Z by LCQQQ	
P2-D8	P2015-2230-1	D:\MassHunter\methods\Benzos_Z_Drugs_ACN_FA_ISP.m	cs-P2015-2230-1-r001.d	Sample		AM 6.1.1 Benzo and Z by LCQQQ	Blood
P2-E9	Blank - P2015-2243-1	D:\MassHunter\methods\Benzos_Z_Drugs_ACN_FA_ISP.m	cs-Carryover blank-P2015-2243-1_r001.d	Blank		AM 6.1.1 Benzo and Z by LCQQQ	
P2-D7	P2015-2243-1	D:\MassHunter\methods\Benzos_Z_Drugs_ACN_FA_ISP.m	cs-P2015-2243-1-r001.d	Sample		AM 6.1.1 Benzo and Z by LCQQQ	Blood
P2-E9	Blank - P2015-2247-1	D:\MassHunter\methods\Benzos_Z_Drugs_ACN_FA_ISP.m	cs-Carryover blank-P2015-2247-1_r001.d	Blank		AM 6.1.1 Benzo and Z by LCQQQ	
P2-D6	P2015-2247-1	D:\MassHunter\methods\Benzos_Z_Drugs_ACN_FA_ISP.m	cs-P2015-2247-1-r001.d	Sample		AM 6.1.1 Benzo and Z by LCQQQ	Blood
P2-E9	Blank - P2015-2248-1	D:\MassHunter\methods\Benzos_Z_Drugs_ACN_FA_ISP.m	cs-Carryover blank-P2015-2248-1_r001.d	Blank		AM 6.1.1 Benzo and Z by LCQQQ	
P2-D5	P2015-2248-1	D:\MassHunter\methods\Benzos_Z_Drugs_ACN_FA_ISP.m	cs-P2015-2248-1-r001.d	Sample		AM 6.1.1 Benzo and Z by LCQQQ	Blood
P2-F9	Blank	D:\MassHunter\methods\Benzos_Z_Drugs_ACN_FA_ISP.m	cs-Carryover blank3_r002.d	Blank		AM 6.1.1 Benzo and Z by LCQQQ	

ISP Forensics Calibration Curve Report



Batch Data Path C:\MassHunter\Data\COMBINED\10-30-15\10-30-15 full backup\QuantResults\DD-CANN-102715.batch.bin
Last Calib Update 11/2/2015 11:06 AM **Analyst Name** ISP TOX

Target Compound OH-THC
Internal Standard OH-THC-d3



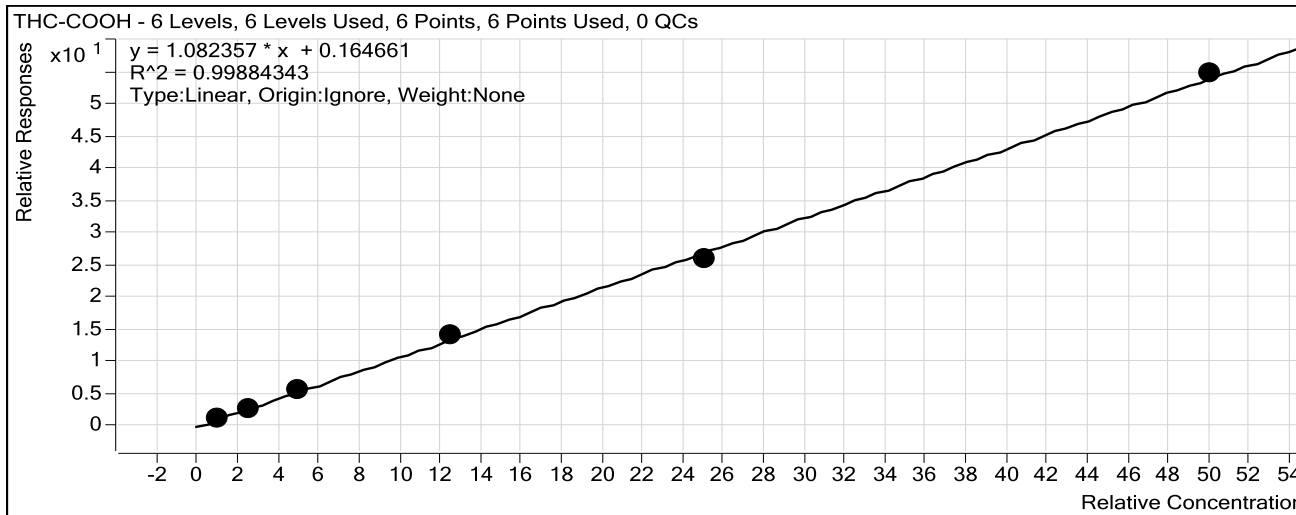
Sample	Level	Enabled	Exp Conc	Final Conc	Accuracy
Blood: 2_10 ng/mL	2	<input checked="" type="checkbox"/>	2	1.6	81.3
Blood: 5_25 ng/mL	3	<input checked="" type="checkbox"/>	5	4.1	81.7
Blood: 10_50 ng/mL	4	<input checked="" type="checkbox"/>	10	9.6	96.2
Blood: 25_125 ng/mL	5	<input checked="" type="checkbox"/>	25	25.8	103.3
Blood: 50_250 ng/mL	6	<input checked="" type="checkbox"/>	50	51.9	103.8
Blood: 100_500 ng/mL	7	<input checked="" type="checkbox"/>	100	98.9	98.9

ISP Forensics Calibration Curve Report



Batch Data Path C:\MassHunter\Data\COMBINED\10-30-15\10-30-15 full backup\QuantResults\DD-CANN-102715.batch.bin
Last Calib Update 11/2/2015 11:06 AM **Analyst Name** ISP TOX

Target Compound *THC-COOH*
Internal Standard *THC-COOH-d3*



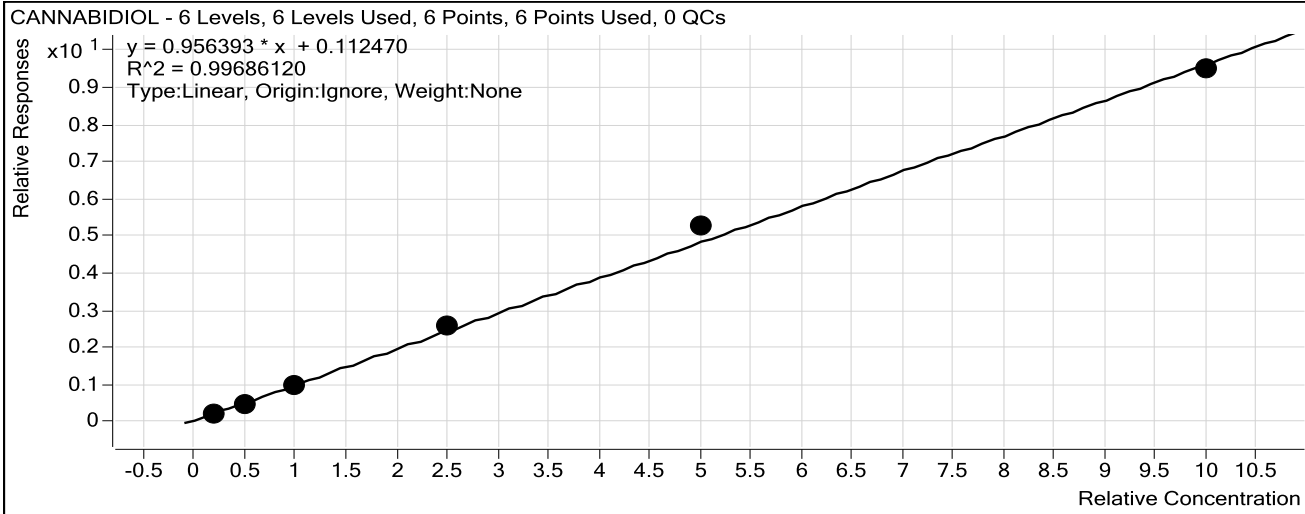
Sample	Level	Enabled	Exp Conc	Final Conc	Accuracy
Blood: 2_10 ng/mL	2	<input checked="" type="checkbox"/>	10	11.2	111.9
Blood: 5_25 ng/mL	3	<input checked="" type="checkbox"/>	25	24.8	99.1
Blood: 10_50 ng/mL	4	<input checked="" type="checkbox"/>	50	51.6	103.1
Blood: 25_125 ng/mL	5	<input checked="" type="checkbox"/>	125	130.1	104.1
Blood: 50_250 ng/mL	6	<input checked="" type="checkbox"/>	250	237.6	95.0
Blood: 100_500 ng/mL	7	<input checked="" type="checkbox"/>	500	504.8	101.0

ISP Forensics Calibration Curve Report



Batch Data Path C:\MassHunter\Data\COMBINED\10-30-15\10-30-15 full backup\QuantResults\DD-CANN-102715.batch.bin
Last Calib Update 11/2/2015 11:06 AM **Analyst Name** ISP TOX

Target Compound CANNABIDIOL
Internal Standard CANNABIDIOL-d3



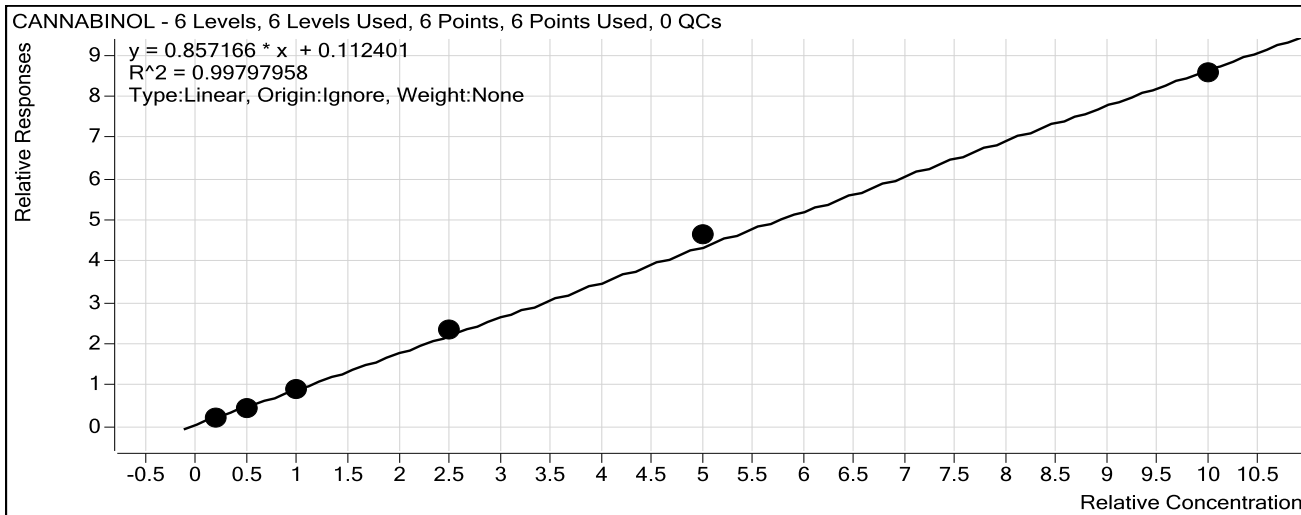
Sample	Level	Enabled	Exp Conc	Final Conc	Accuracy
Blood: 2_10 ng/mL	2	<input checked="" type="checkbox"/>	2	1.4	71.2
Blood: 5_25 ng/mL	3	<input checked="" type="checkbox"/>	5	3.9	77.4
Blood: 10_50 ng/mL	4	<input checked="" type="checkbox"/>	10	9.0	89.7
Blood: 25_125 ng/mL	5	<input checked="" type="checkbox"/>	25	25.8	103.3
Blood: 50_250 ng/mL	6	<input checked="" type="checkbox"/>	50	53.9	107.8
Blood: 100_500 ng/mL	7	<input checked="" type="checkbox"/>	100	98.0	98.0

ISP Forensics Calibration Curve Report



Batch Data Path C:\MassHunter\Data\COMBINED\10-30-15\10-30-15 full backup\QuantResults\DD-CANN-102715.batch.bin
Last Calib Update 11/2/2015 11:06 AM **Analyst Name** ISP TOX

Target Compound CANNABINOL
Internal Standard CANNABINOL-d3



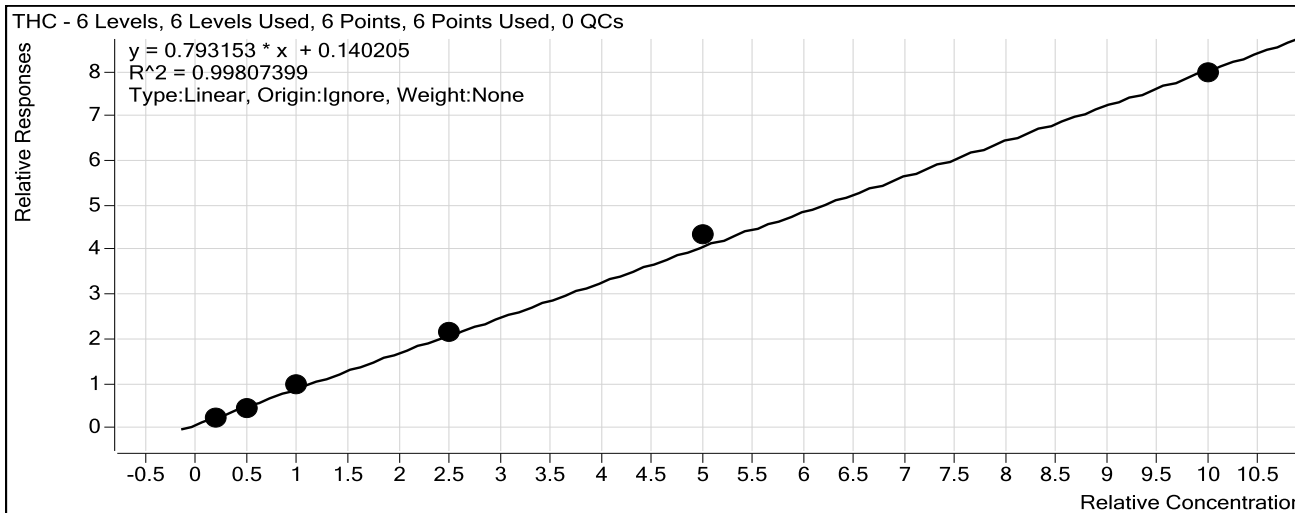
Sample	Level	Enabled	Exp Conc	Final Conc	Accuracy
Blood: 2_10 ng/mL	2	<input checked="" type="checkbox"/>	2	1.5	74.1
Blood: 5_25 ng/mL	3	<input checked="" type="checkbox"/>	5	3.9	78.4
Blood: 10_50 ng/mL	4	<input checked="" type="checkbox"/>	10	9.2	91.7
Blood: 25_125 ng/mL	5	<input checked="" type="checkbox"/>	25	26.1	104.4
Blood: 50_250 ng/mL	6	<input checked="" type="checkbox"/>	50	52.9	105.8
Blood: 100_500 ng/mL	7	<input checked="" type="checkbox"/>	100	98.4	98.4

ISP Forensics Calibration Curve Report



Batch Data Path C:\MassHunter\Data\COMBINED\10-30-15\10-30-15 full backup\QuantResults\DD-CANN-102715.batch.bin
Last Calib Update 11/2/2015 11:06 AM **Analyst Name** ISP TOX

Target Compound *THC*
Internal Standard *THC-d3*



Sample	Level	Enabled	Exp Conc	Final Conc	Accuracy
Blood: 2_10 ng/mL	2	<input checked="" type="checkbox"/>	2	1.4	69.1
Blood: 5_25 ng/mL	3	<input checked="" type="checkbox"/>	5	3.5	69.4
Blood: 10_50 ng/mL	4	<input checked="" type="checkbox"/>	10	10.5	105.1
Blood: 25_125 ng/mL	5	<input checked="" type="checkbox"/>	25	25.2	100.8
Blood: 50_250 ng/mL	6	<input checked="" type="checkbox"/>	50	52.9	105.8
Blood: 100_500 ng/mL	7	<input checked="" type="checkbox"/>	100	98.5	98.5

ISP FORENSICS
Pocatello
Cannabinoid Analysis Report

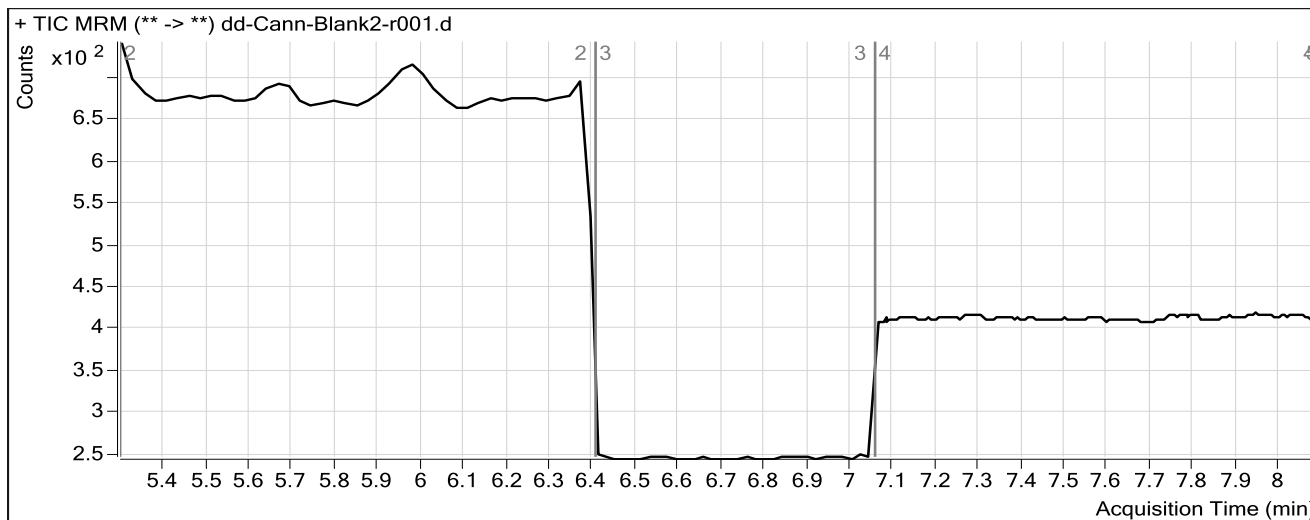


Batch Data Path	C:\MassHunter\Data\COMBINED\10-30-15\10-30-15 full backup\QuantResults\DD-CANN-102715.l		
Analysis Time	11/2/2015 11:06 AM	Analyst Name	ISPUser
Report Time	11/2/2015 11:13 AM	Reporter Name	ISPUser
Last Calib Update	11/2/2015 11:06 AM	Batch State	Processed

Analysis Info

Acq Time	2015-10-30 14:27	Data File	dd-Cann-Blank2-r001.d
Sample Type	Blank	Sample Name	Blank
Dilution	1	Acq Method	isp cannabinoids 103015.m
Position	P1-A1	Sample Info	
Inj Vol	-1	Comment	AM 6.1.2 Cannabinoids by LCQQQ

Sample Chromatogram



ISP FORENSICS
Pocatello
Cannabinoid Analysis Report

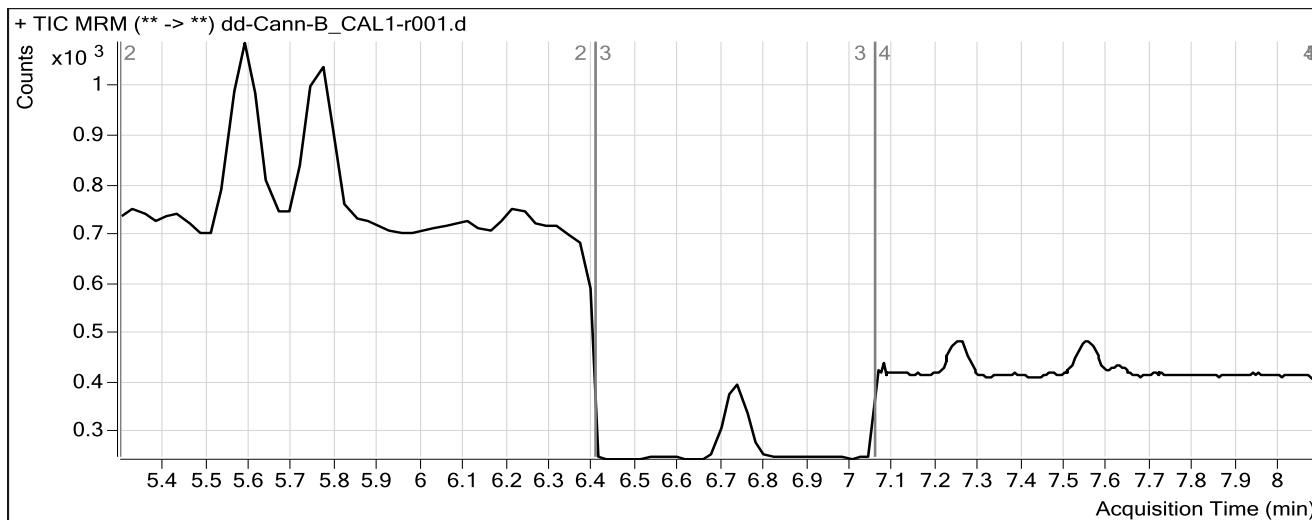


Batch Data Path	C:\MassHunter\Data\COMBINED\10-30-15\10-30-15 full backup\QuantResults\DD-CANN-102715.l		
Analysis Time	11/2/2015 11:06 AM	Analyst Name	ISPUser
Report Time	11/2/2015 11:13 AM	Reporter Name	ISPUser
Last Calib Update	11/2/2015 11:06 AM	Batch State	Processed

Analysis Info

Acq Time	2015-10-30 14:41	Data File	dd-Cann-B_CAL1-r001.d
Sample Type	Calibration	Sample Name	Blood: 1_5 ng/mL
Dilution	1	Acq Method	isp cannabinoids 103015.m
Position	P1-A2	Sample Info	c-THC @5ng/mL, all others @1 ng/mL
Inj Vol	-1	Comment	AM 6.1.2 Cannabinoids by LCQQQ

Sample Chromatogram



ISP FORENSICS

Pocatello

Cannabinoid Analysis Report

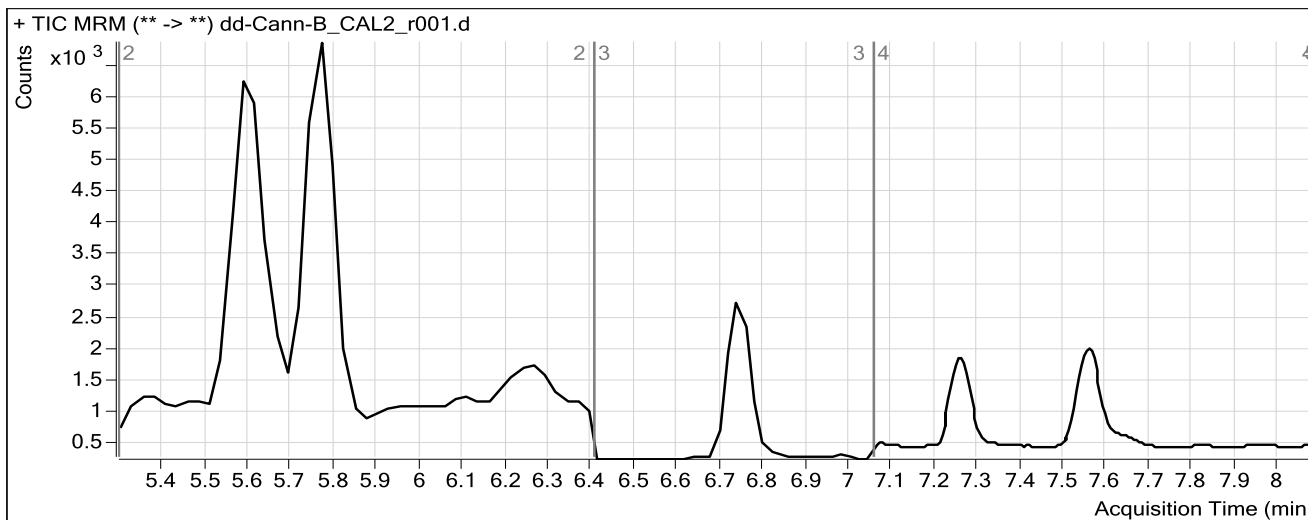


Batch Data Path	C:\MassHunter\Data\COMBINED\10-30-15\10-30-15 full backup\QuantResults\DD-CANN-102715.batch.bin		
Analysis Time	11/2/2015 11:06 AM	Analyst Name	ISPUser
Report Time	11/2/2015 11:13 AM	Reporter Name	ISPUser
Last Calib Update	11/2/2015 11:06 AM	Batch State	Processed

Analysis Info

Acq Time	2015-10-30 14:54	Data File	dd-Cann-B_CAL2_r001.d
Sample Type	Calibration	Sample Name	Blood: 2_10 ng/mL
Dilution	1	Acq Method	isp cannabinoids 103015.m
Position	P1-A3	Sample Info	c-THC @10ng/mL, all others @2 ng/mL
Inj Vol	-1	Comment	AM 6.1.2 Cannabinoids by LCQQQ

Sample Chromatogram



Results

Compound	ISTD Compound	RT	Response	ISTD Resp	Resp Ratio	Final Conc
OH-THC	OH-THC-d3	5.617	5456	16023	0.3405	1.6267
THC-COOH	THC-COOH-d3	5.770	9035	6568	1.3756	11.1883
CANNABIDIOL	CANNABIDIOL-d3	6.744	918	3694	0.2486	1.4232
CANNABINOL	CANNABINOL-d3	7.265	759	3170	0.2394	1.4815
THC	THC-d3	7.560	616	2466	0.2497	1.3811

ISP FORENSICS

Pocatello

Cannabinoid Analysis Report

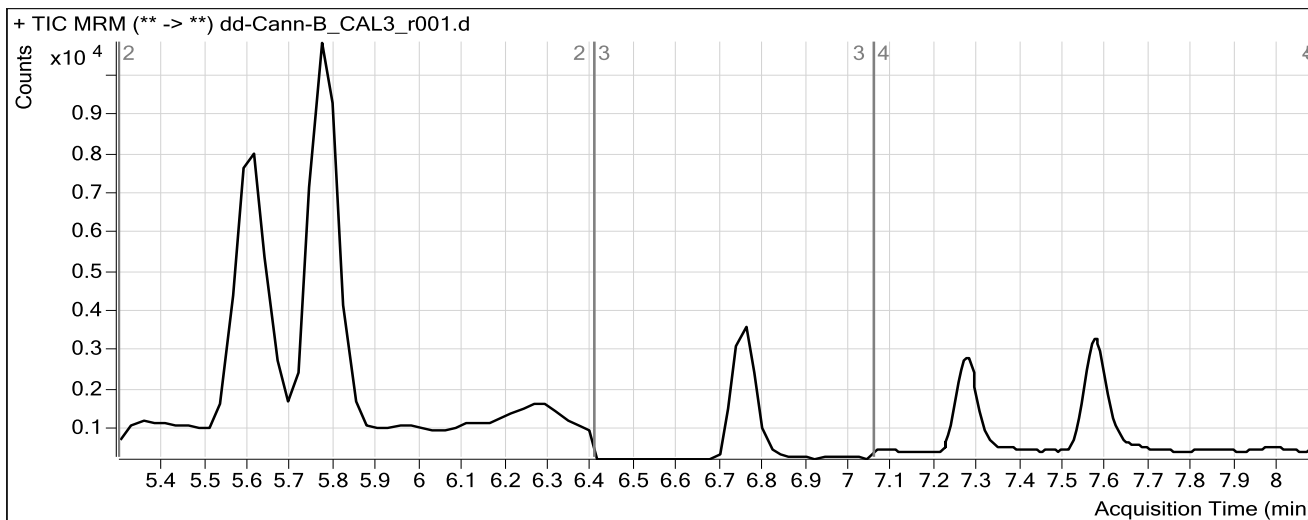


Batch Data Path	C:\MassHunter\Data\COMBINED\10-30-15\10-30-15 full backup\QuantResults\DD-CANN-102715.batch.bin		
Analysis Time	11/2/2015 11:06 AM	Analyst Name	ISPUser
Report Time	11/2/2015 11:13 AM	Reporter Name	ISPUser
Last Calib Update	11/2/2015 11:06 AM	Batch State	Processed

Analysis Info

Acq Time	2015-10-30 15:07	Data File	dd-Cann-B_CAL3_r001.d
Sample Type	Calibration	Sample Name	Blood: 5_25 ng/mL
Dilution	1	Acq Method	isp cannabinoids 103015.m
Position	P1-A4	Sample Info	c-THC @25ng/mL, all others @5 ng/mL
Inj Vol	-1	Comment	AM 6.1.2 Cannabinoids by LCQQQ

Sample Chromatogram



Results

Compound	ISTD Compound	RT	Response	ISTD Resp	Resp Ratio	Final Conc
OH-THC	OH-THC-d3	5.617	12159	17383	0.6995	4.0851
THC-COOH	THC-COOH-d3	5.770	16888	5931	2.8474	24.7864
CANNABIDIOL	CANNABIDIOL-d3	6.764	1979	4099	0.4828	3.8718
CANNABINOL	CANNABINOL-d3	7.277	2036	4540	0.4485	3.9214
THC	THC-d3	7.576	1424	3428	0.4154	3.4694

ISP FORENSICS

Pocatello

Cannabinoid Analysis Report

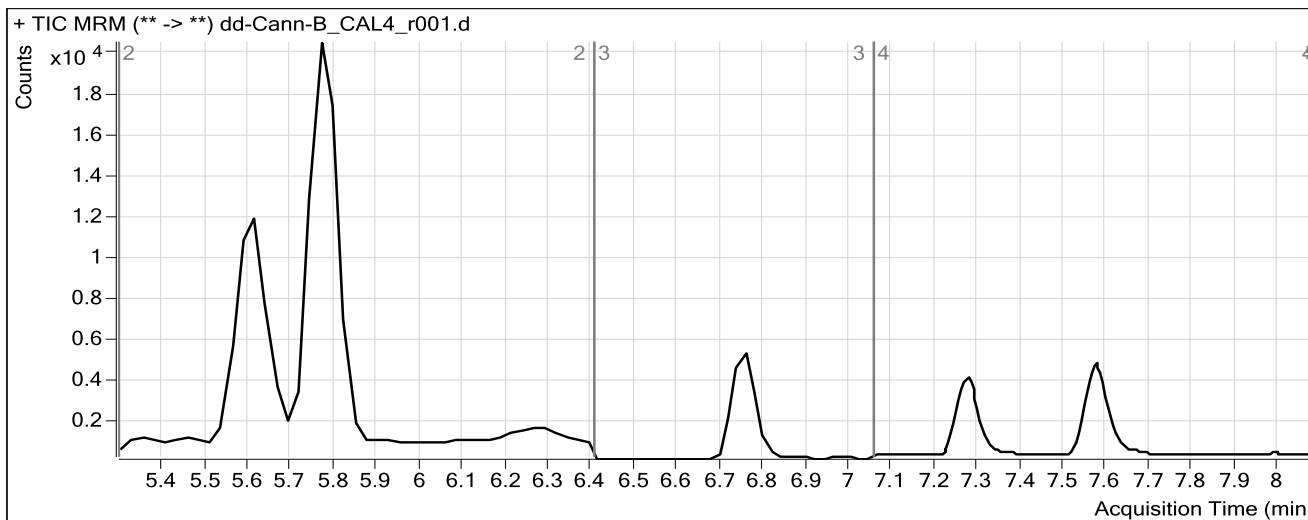


Batch Data Path	C:\MassHunter\Data\COMBINED\10-30-15\10-30-15 full backup\QuantResults\DD-CANN-102715.batch.bin		
Analysis Time	11/2/2015 11:06 AM	Analyst Name	ISPUser
Report Time	11/2/2015 11:13 AM	Reporter Name	ISPUser
Last Calib Update	11/2/2015 11:06 AM	Batch State	Processed

Analysis Info

Acq Time	2015-10-30 15:20	Data File	dd-Cann-B_CAL4_r001.d
Sample Type	Calibration	Sample Name	Blood: 10_50 ng/mL
Dilution	1	Acq Method	isp cannabinoids 103015.m
Position	P1-A5	Sample Info	c-THC @50ng/mL, all others @10 ng/mL
Inj Vol	-1	Comment	AM 6.1.2 Cannabinoids by LCQQQ

Sample Chromatogram



Results

Compound	ISTD Compound	RT	Response	ISTD Resp	Resp Ratio	Final Conc
OH-THC	OH-THC-d3	5.617	27442	18210	1.5070	9.6153
THC-COOH	THC-COOH-d3	5.770	34133	5940	5.7467	51.5726
CANNABIDIOL	CANNABIDIOL-d3	6.764	4741	4887	0.9702	8.9679
CANNABINOL	CANNABINOL-d3	7.277	4638	5164	0.8981	9.1664
THC	THC-d3	7.576	3692	3791	0.9738	10.5097

ISP FORENSICS

Pocatello

Cannabinoid Analysis Report

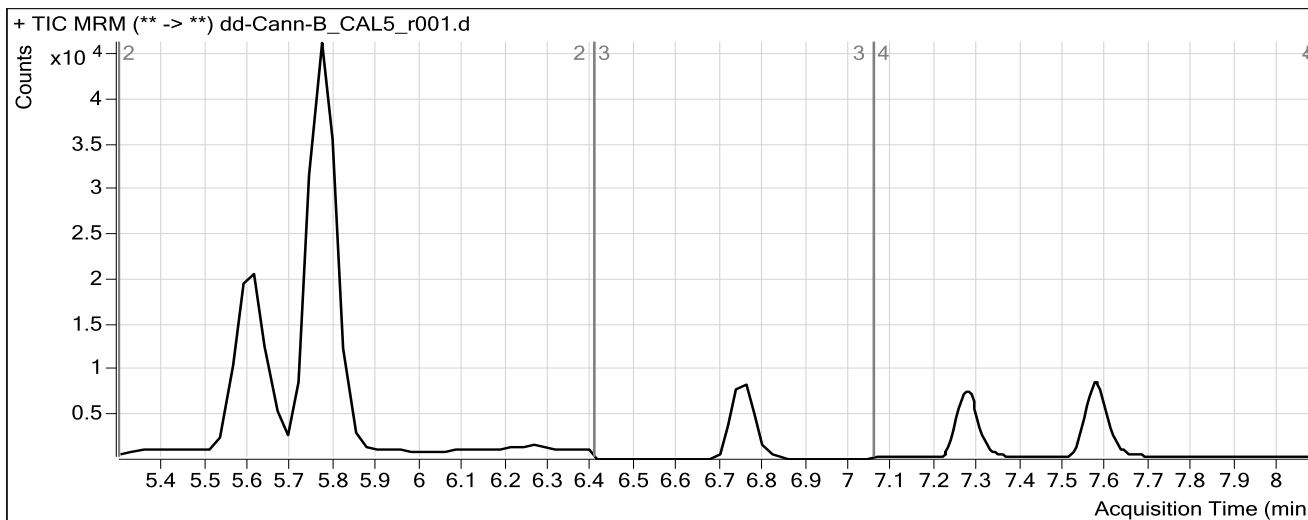


Batch Data Path	C:\MassHunter\Data\COMBINED\10-30-15\10-30-15 full backup\QuantResults\DD-CANN-102715.batch.bin		
Analysis Time	11/2/2015 11:06 AM	Analyst Name	ISPUser
Report Time	11/2/2015 11:13 AM	Reporter Name	ISPUser
Last Calib Update	11/2/2015 11:06 AM	Batch State	Processed

Analysis Info

Acq Time	2015-10-30 15:34	Data File	dd-Cann-B_CAL5_r001.d
Sample Type	Calibration	Sample Name	Blood: 25_125 ng/mL
Dilution	1	Acq Method	isp cannabinoids 103015.m
Position	P1-A6	Sample Info	c-THC @125ng/mL, all others @25 ng/mL
Inj Vol	-1	Comment	AM 6.1.2 Cannabinoids by LCQQQ

Sample Chromatogram



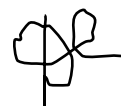
Results

Compound	ISTD Compound	RT	Response	ISTD Resp	Resp Ratio	Final Conc
OH-THC	OH-THC-d3	5.617	65199	16828	3.8745	25.8295
THC-COOH	THC-COOH-d3	5.770	82802	5813	14.2449	130.0883
CANNABIDIOL	CANNABIDIOL-d3	6.764	11822	4577	2.5828	25.8299
CANNABINOL	CANNABINOL-d3	7.277	13024	5544	2.3492	26.0951
THC	THC-d3	7.571	9082	4248	2.1380	25.1879

ISP FORENSICS

Pocatello

Cannabinoid Analysis Report

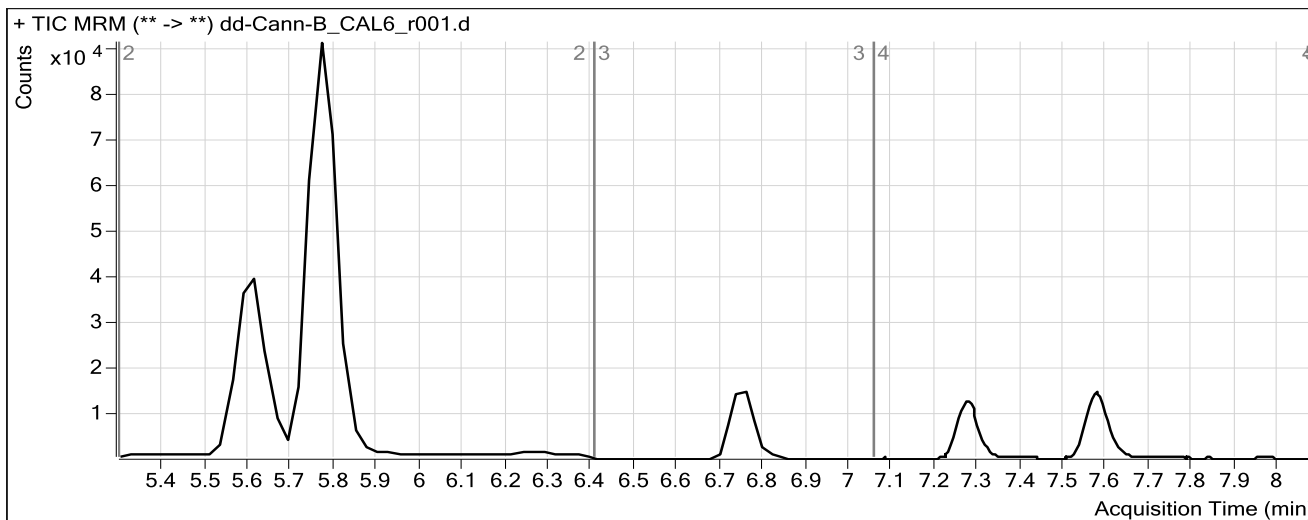


Batch Data Path	C:\MassHunter\Data\COMBINED\10-30-15\10-30-15 full backup\QuantResults\DD-CANN-102715.batch.bin		
Analysis Time	11/2/2015 11:06 AM	Analyst Name	ISPUser
Report Time	11/2/2015 11:13 AM	Reporter Name	ISPUser
Last Calib Update	11/2/2015 11:06 AM	Batch State	Processed

Analysis Info

Acq Time	2015-10-30 15:47	Data File	dd-Cann-B_CAL6_r001.d
Sample Type	Calibration	Sample Name	Blood: 50_250 ng/mL
Dilution	1	Acq Method	isp cannabinoids 103015.m
Position	P1-A7	Sample Info	c-THC @250ng/mL, all others @50 ng/mL
Inj Vol	-1	Comment	AM 6.1.2 Cannabinoids by LCQQQ

Sample Chromatogram



Results

Compound	ISTD Compound	RT	Response	ISTD Resp	Resp Ratio	Final Conc
OH-THC	OH-THC-d3	5.617	138740	18056	7.6839	51.9183
THC-COOH	THC-COOH-d3	5.770	169473	6548	25.8829	237.6135
CANNABIDIOL	CANNABIDIOL-d3	6.764	25649	4870	5.2662	53.8869
CANNABINOL	CANNABINOL-d3	7.277	24750	5324	4.6488	52.9234
THC	THC-d3	7.576	18627	4294	4.3377	52.9221

ISP FORENSICS

Pocatello

Cannabinoid Analysis Report

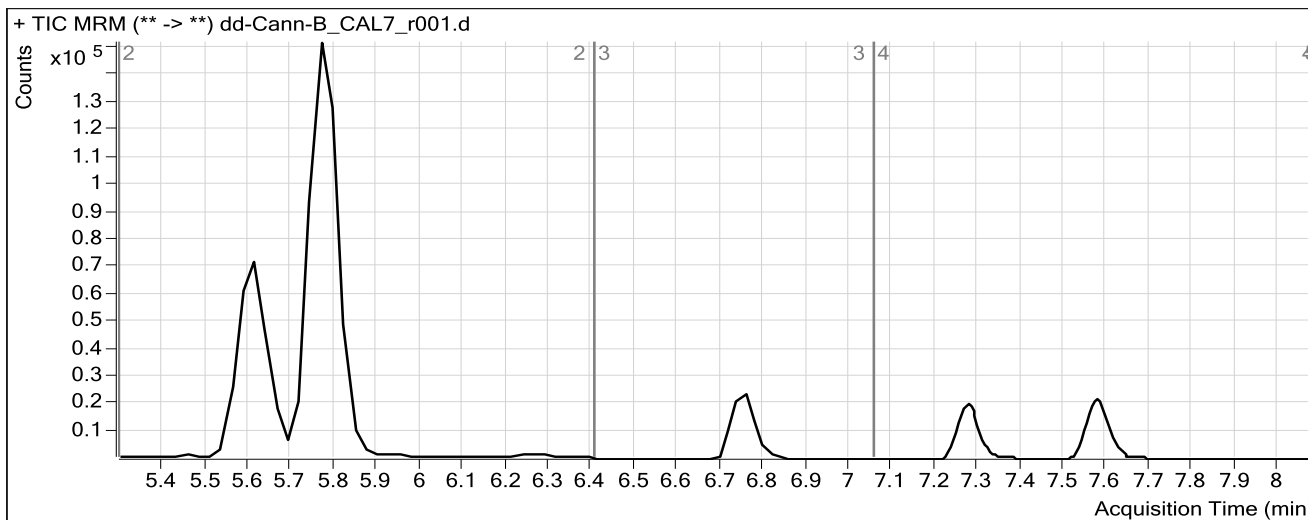


Batch Data Path	C:\MassHunter\Data\COMBINED\10-30-15\10-30-15 full backup\QuantResults\DD-CANN-102715.batch.bin		
Analysis Time	11/2/2015 11:06 AM	Analyst Name	ISPUser
Report Time	11/2/2015 11:13 AM	Reporter Name	ISPUser
Last Calib Update	11/2/2015 11:06 AM	Batch State	Processed

Analysis Info

Acq Time	2015-10-30 16:00	Data File	dd-Cann-B_CAL7_r001.d
Sample Type	Calibration	Sample Name	Blood: 100_500 ng/mL
Dilution	1	Acq Method	isp cannabinoids 103015.m
Position	P1-A8	Sample Info	c-THC @500ng/mL, all others @100 ng/mL
Inj Vol	-1	Comment	AM 6.1.2 Cannabinoids by LCQQQ

Sample Chromatogram



Results

Compound	ISTD Compound	RT	Response	ISTD Resp	Resp Ratio	Final Conc
OH-THC	OH-THC-d3	5.617	265332	18239	14.5476	98.9252
THC-COOH	THC-COOH-d3	5.770	292087	5330	54.7967	504.7508
CANNABIDIOL	CANNABIDIOL-d3	6.764	43449	4580	9.4871	98.0202
CANNABINOL	CANNABINOL-d3	7.277	42578	4981	8.5480	98.4122
THC	THC-d3	7.571	29335	3688	7.9551	98.5299

ISP FORENSICS
Pocatello
Cannabinoid Analysis Report

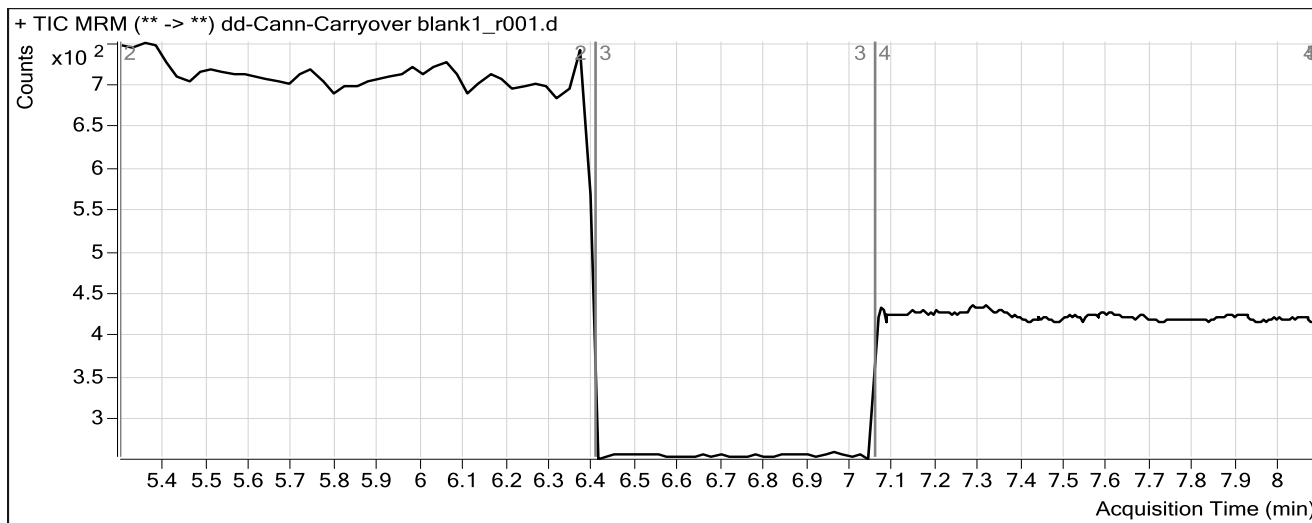


Batch Data Path	C:\MassHunter\Data\COMBINED\10-30-15\10-30-15 full backup\QuantResults\DD-CANN-102715.l		
Analysis Time	11/2/2015 11:06 AM	Analyst Name	ISPUser
Report Time	11/2/2015 11:13 AM	Reporter Name	ISPUser
Last Calib Update	11/2/2015 11:06 AM	Batch State	Processed

Analysis Info

Acq Time	2015-10-30 16:13	Data File	dd-Cann-Carryover blank1_r001.d
Sample Type	Blank	Sample Name	Blank
Dilution	1	Acq Method	isp cannabinoids 103015.m
Position	P1-A1	Sample Info	
Inj Vol	-1	Comment	AM 6.1.2 Cannabinoids by LCQQQ

Sample Chromatogram



ISP FORENSICS
Pocatello
Cannabinoid Analysis Report

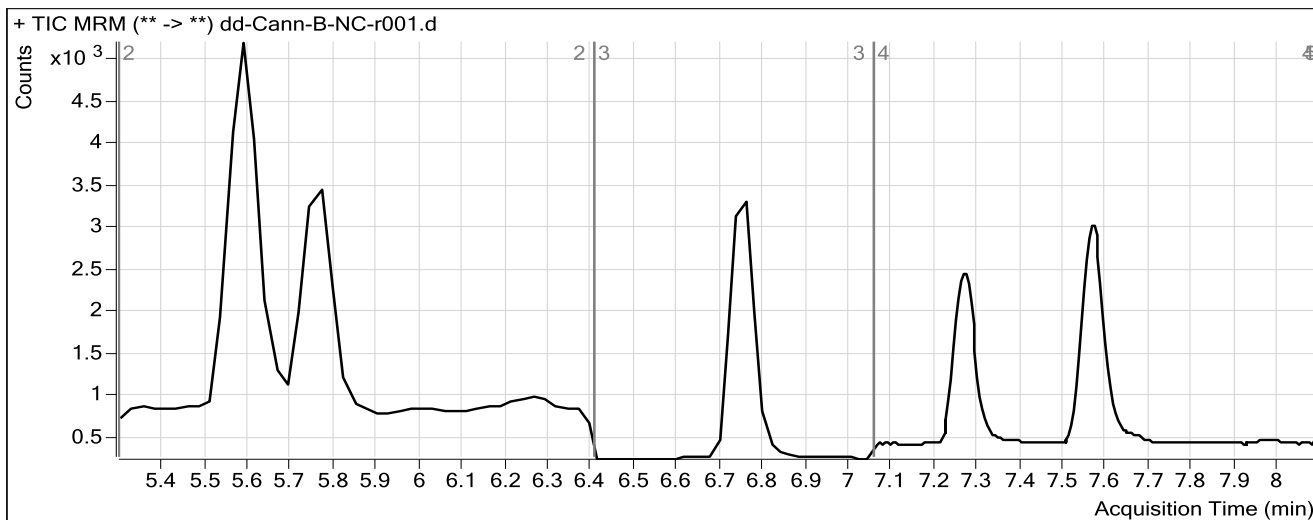


Batch Data Path C:\MassHunter\Data\COMBINED\10-30-15\10-30-15 full backup\QuantResults\DD-CANN-102715.batch.bin
Analysis Time 11/2/2015 11:06 AM **Analyst Name** ISPUser
Report Time 11/2/2015 11:13 AM **Reporter Name** ISPUser
Last Calib Update 11/2/2015 11:06 AM **Batch State** Processed

Analysis Info

Acq Time 2015-10-30 16:26 **Data File** dd-Cann-B-NC-r001.d
Sample Type Sample **Sample Name** Blood Negative Control
Dilution 1 **Acq Method** isp cannabinoids 103015.m
Position P1-A9 **Sample Info** Negative Blood UTAK Lot B0689
Inj Vol -1 **Comment** AM 6.1.2 Cannabinoids by LCQQQ

Sample Chromatogram



Results

Compound	ISTD Compound	RT	Response	ISTD Resp	Resp Ratio	Final Conc
THC-COOH	THC-COOH-d3	5.770	1548	6139	0.2521	0.8082 *

*None detected.

ISP FORENSICS

Pocatello

Cannabinoid Analysis Report

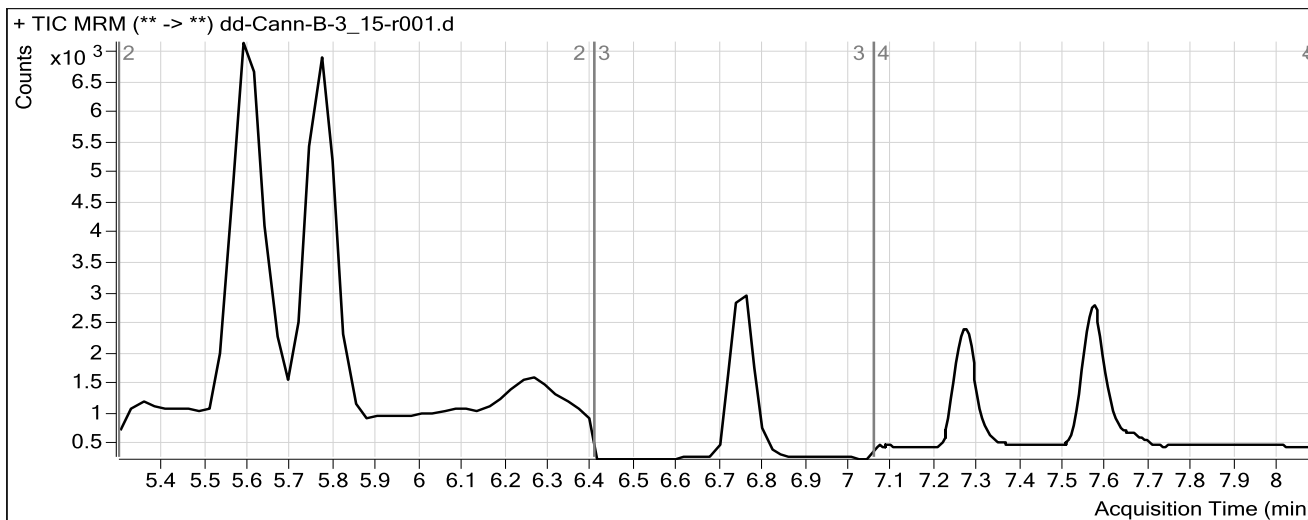


Batch Data Path	C:\MassHunter\Data\COMBINED\10-30-15\10-30-15 full backup\QuantResults\DD-CANN-102715.batch.bin		
Analysis Time	11/2/2015 11:06 AM	Analyst Name	ISPUser
Report Time	11/2/2015 11:13 AM	Reporter Name	ISPUser
Last Calib Update	11/2/2015 11:06 AM	Batch State	Processed

Analysis Info

Acq Time	2015-10-30 16:40	Data File	dd-Cann-B-3_15-r001.d
Sample Type	Sample	Sample Name	Blood 3_15ng/mL
Dilution	1	Acq Method	isp cannabinoids 103015.m
Position	P1-B1	Sample Info	c-THC @15ng/mL, all others @3 ng/mL
Inj Vol	-1	Comment	AM 6.1.2 Cannabinoids by LCQQQ

Sample Chromatogram



Results

Compound	ISTD Compound	RT	Response	ISTD Resp	Resp Ratio	Final Conc
OH-THC	OH-THC-d3	5.617	9989	15861	0.6298	3.6078
THC-COOH	THC-COOH-d3	5.770	9273	5605	1.6543	13.7633
CANNABIDIOL	CANNABIDIOL-d3	6.764	1227	3799	0.3231	2.2021
CANNABINOL	CANNABINOL-d3	7.277	1607	3806	0.4223	3.6158
THC	THC-d3	7.576	1088	2996	0.3633	2.8129

ISP FORENSICS
Pocatello
Cannabinoid Analysis Report

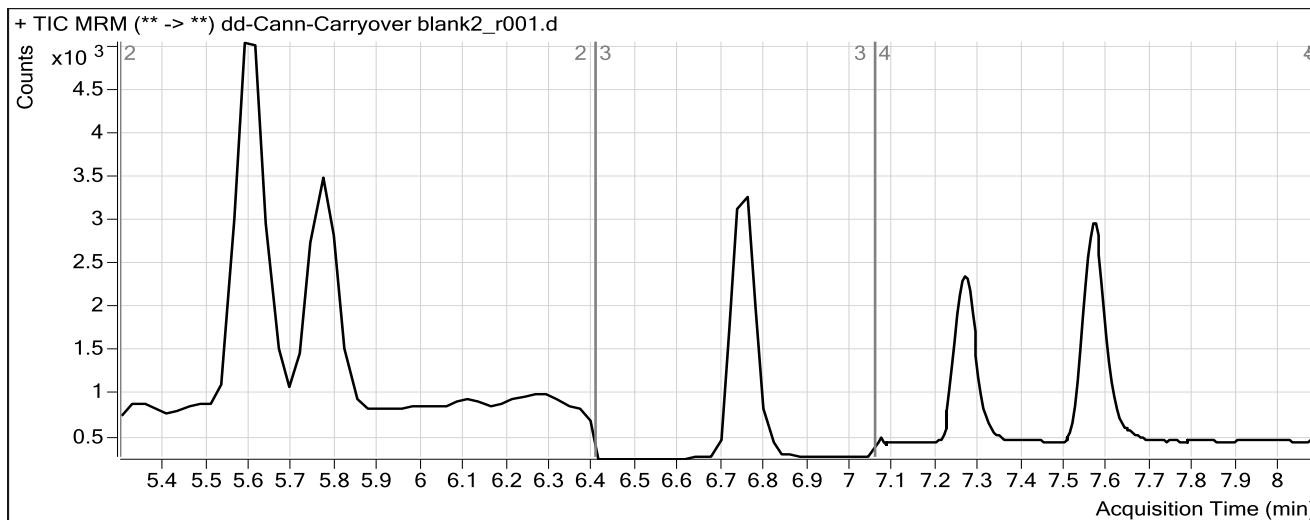


Batch Data Path	C:\MassHunter\Data\COMBINED\10-30-15\10-30-15 full backup\QuantResults\DD-CANN-102715.l		
Analysis Time	11/2/2015 11:06 AM	Analyst Name	ISPUser
Report Time	11/2/2015 11:13 AM	Reporter Name	ISPUser
Last Calib Update	11/2/2015 11:06 AM	Batch State	Processed

Analysis Info

Acq Time	2015-10-30 21:17	Data File	dd-Cann-Carryover blank2_r001.d
Sample Type	Blank	Sample Name	Blank
Dilution	1	Acq Method	isp cannabinoids 103015.m
Position	P1-A9	Sample Info	
Inj Vol	-1	Comment	AM 6.1.2 Cannabinoids by LCQQQ

Sample Chromatogram



ISP FORENSICS

Pocatello

Cannabinoid Analysis Report

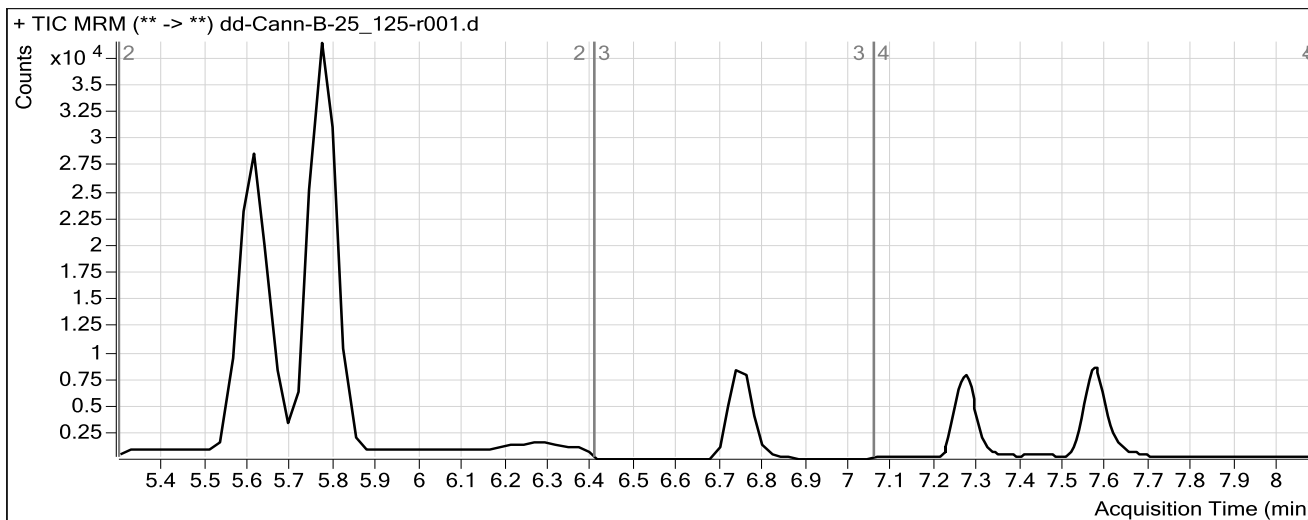


Batch Data Path	C:\MassHunter\Data\COMBINED\10-30-15\10-30-15 full backup\QuantResults\DD-CANN-102715.batch.bin		
Analysis Time	11/2/2015 11:06 AM	Analyst Name	ISPUser
Report Time	11/2/2015 11:13 AM	Reporter Name	ISPUser
Last Calib Update	11/2/2015 11:06 AM	Batch State	Processed

Analysis Info

Acq Time	2015-10-30 21:31	Data File	dd-Cann-B-25_125-r001.d
Sample Type	Sample	Sample Name	Blood 25_125ngmL
Dilution	1	Acq Method	isp cannabinoids 103015.m
Position	P1-C3	Sample Info	c-THC @125ng/mL, all others @25 ng/mL
Inj Vol	-1	Comment	AM 6.1.2 Cannabinoids by LCQQQ

Sample Chromatogram



Results

Compound	ISTD Compound	RT	Response	ISTD Resp	Resp Ratio	Final Conc
OH-THC	OH-THC-d3	5.617	95579	13037	7.3314	49.5042
THC-COOH	THC-COOH-d3	5.770	68400	4675	14.6298	133.6452
CANNABIDIOL	CANNABIDIOL-d3	6.744	13235	3620	3.6555	37.0463
CANNABINOL	CANNABINOL-d3	7.271	14683	3878	3.7859	42.8562
THC	THC-d3	7.571	10335	2936	3.5206	42.6194

ISP FORENSICS
Pocatello
Cannabinoid Analysis Report



Batch Data Path	C:\MassHunter\Data\COMBINED\10-30-15\10-30-15 full backup\QuantResults\DD-CANN-102715.l		
Analysis Time	11/2/2015 11:06 AM	Analyst Name	ISPUser
Report Time	11/2/2015 11:13 AM	Reporter Name	ISPUser
Last Calib Update	11/2/2015 11:06 AM	Batch State	Processed

Analysis Info

Acq Time	2015-10-30 22:37	Data File	dd-Cann-Blank3-r001.d
Sample Type	Blank	Sample Name	Blank
Dilution	1	Acq Method	isp cannabinoids 103015.m
Position	P1-A9	Sample Info	
Inj Vol	-1	Comment	AM 6.1.2 Cannabinoids by LCQQQ

Sample Chromatogram

